




# COMMERCIAL

## Buyer's Guide

THE DOOR TO QUALITY.™





*C.H.I. doors are constructed using the finest raw materials, produced by the hands of skilled craftsmen, customized with computer-aided precision, and delivered both on time and with care.*

*Our entire line of 3200 Series doors was specially engineered for extra durability to afford years of dependable operation — even in the toughest industrial environments.*

*C.H.I. Commercial Doors. Tough. Dependable.*



# TOUGH. DEPENDABLE.

For commercial applications, TOUGHNESS is the name of the game. Because commercial-use doors see a lot of action, they need to be durable and long-lasting. C.H.I.'s line of tough, heavy-duty commercial doors are built to withstand a higher volume of operation, so you can be sure they'll be around for a long time. And C.H.I. backs up all of its commercial doors with a 10-year limited warranty, because you want to feel good about your decision.





THE 3200 SERIES –  
PREMIUM COMMERCIAL DOORS.





#### **Model 3250**

Non-insulated, 25-gauge ribbed steel available in white only.

#### **Model 3251**

Polystyrene insulation with vinyl back, 25-gauge ribbed steel available in white only. R-value\*: 8.0

#### **Model 3252**

Polystyrene insulation with 27-gauge steel back, 25-gauge ribbed steel available in white only. R-value\*: 8.0

#### **Model 3240**

Non-insulated, 24-gauge ribbed steel available in white, brown, sandstone or gray.

#### **Model 3241**

Polystyrene insulation with vinyl back, 24-gauge ribbed steel available in white, brown, sandstone, or gray. R-value\*: 8.0

#### **Model 3242**

Polystyrene insulation with 27-gauge steel back, 24-gauge ribbed steel available in white, brown, sandstone or gray. R-value\*: 8.0

#### **Model 3220**

Non-insulated, 20-gauge ribbed steel available in white only.

#### **Model 3221**

Polystyrene insulation with vinyl back, 20-gauge ribbed steel available in white only. R-value\*: 8.0

#### **Model 3222**

Polystyrene insulation with 27-gauge steel back, 20-gauge ribbed steel available in white only. R-value\*: 8.0

#### **Model 3285**

2" thick, 26-gauge micro-grooved polystyrene sandwich door available in white, almond, sandstone or brown. R-value\*: 10.29

#### **Model 3206**

1.5" thick, 28-gauge, urethane-filled, micro-grooved sandwich door available in white only. R-value: 13.68

#### **Model 3216**

2" thick, 26-gauge, urethane-filled, micro-grooved sandwich door available in white, almond, sandstone, or brown. R-value\*: 17.54

#### **Model 3212**

2" thick, 20-gauge, urethane-filled, micro-grooved sandwich door available in white. R-value\*: 17.54

#### **Model 3295**

Aluminum full-view door available in clear anodized aluminum or a selection of stock RAL powder-coat options of 188 colors.

\*R-value Testing is in accordance with ASTM C518 standards.



***Regardless of your specific application, C.H.I. offers a premium door product guaranteed to deliver years of dependable operation. Our ribbed steel models are constructed with heavy-duty 18-gauge stiles for enhanced longevity and come in a variety of gauges, both hollow and insulated. There are multiple track systems, and a variety of door colors as well. And because commercial applications vary, C.H.I. offers numerous customization options to fit your specific needs.***

***After comparing models, if you're not sure which C.H.I. commercial door is right for you, talk to your authorized C.H.I. distributor. Their expertise can help you determine the best C.H.I. door for your needs.***



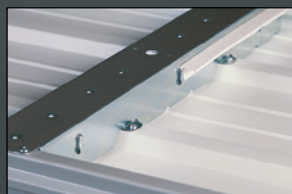
9' x 7' 3252 white with optional 24" x 6" windows.



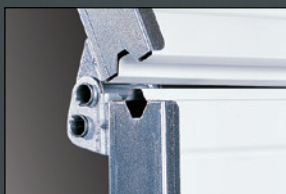
Larger doors come standard with double-end hinges and long-stem rollers for smooth operation and long life.



The face skin is attached to the box stiles using semi-tubular rivets vs. adhesives for added rigidity.



Box type stiles include unique tabs to keep insulation retainer clips tight against the stiles.



Section joints on all C.H.I. doors are tongue-and-groove for a tighter weatherseal and structural rigidity.



Extra-heavy bottom brackets are included for larger door sizes.

These models are also available in



## RIBBED STEEL DOORS

# HEAVY-DUTY. RUGGED.

<b>MODEL 3250**</b>	25-gauge, Non-insulated
<b>MODEL 3251**</b>	25-gauge, Polystyrene Vinyl Back
<b>MODEL 3252**</b>	25-gauge, Polystyrene Steel Back
<b>MODEL 3240</b>	24-gauge, Non-insulated
<b>MODEL 3241</b>	24-gauge, Polystyrene Vinyl Back
<b>MODEL 3242</b>	24-gauge, Polystyrene Steel Back
<b>MODEL 3220</b>	20-gauge, Non-insulated
<b>MODEL 3221</b>	20-gauge, Polystyrene Vinyl Back
<b>MODEL 3222</b>	20-gauge, Polystyrene Steel Back

### SECTIONS

Roll-formed steel sections are 2" thick, hot-dipped galvanized with a baked-on polyester finish

- Sections are available in:
  - 20-gauge white
  - 24-gauge white, brown, gray or sandstone
  - 25-gauge white
- Stiles are box-shaped and galvanized
- Section joints are tongue-and-groove
- Bottom "U" type astragal is a standard feature
- Stiles are face-riveted vs glued

### TRACKS

- Tracks are 2" or 3", as specified
- Available in bracket mount, angle mount, clip angle mount, 12" radius, 15" radius, high lift, vertical lift, roof pitch, or dual track low headroom

### HARDWARE

- Package includes 11-gauge or 14-gauge hinges as specified
- 2" or 3" short-stem or long-stem ball bearing rollers
- Heavy-duty adjustable top roller brackets

### SPRINGS

- Torsion springs are helically wound with oil-tempered wire
- Springs are individually-calibrated for each door
- Torsion tubes are galvanized for rust resistance
- High cycle spring options may be specified

### INSULATION TYPE

- Polystyrene with high impact vinyl back cover
- Polystyrene with 27-gauge steel back cover
- Stiles include special clips to hold insulation retainer in position
- Insulated doors R-value\* - 8.0

\*R-value Testing is in accordance with ASTM C518 standards.

\*\*The steel characteristics and thickness used in models 3250/3251/3252 are equivalent to the "nominal 24 gauge" classification used by other manufacturers in the door industry.



MODEL 3285 26-gauge, Polystyrene

## SECTIONS

- Features four evenly spaced micro-grooves that run horizontally across each section
- Double-sided steel doors are 26-gauge front and 27-gauge back for sturdiness
- Concealed steel back-up plates run from top to bottom of each section for secure hardware attachment
- Section joints are tongue-and-groove
- White painted end stiles
- Bottom "U" type astragal is a standard feature
- Available in white, almond, sandstone or brown

## TRACKS

- Tracks are 2" or 3", as specified
- Available in bracket mount, angle mount, clip angle mount, 12" radius, 15" radius, high lift, vertical lift, roof pitch, or dual track low headroom

## HARDWARE

- Package includes 11-gauge or 14-gauge hinges as specified
- 2" or 3" short-stem or long-stem ball bearing rollers
- Heavy-duty adjustable top roller brackets

## SPRINGS

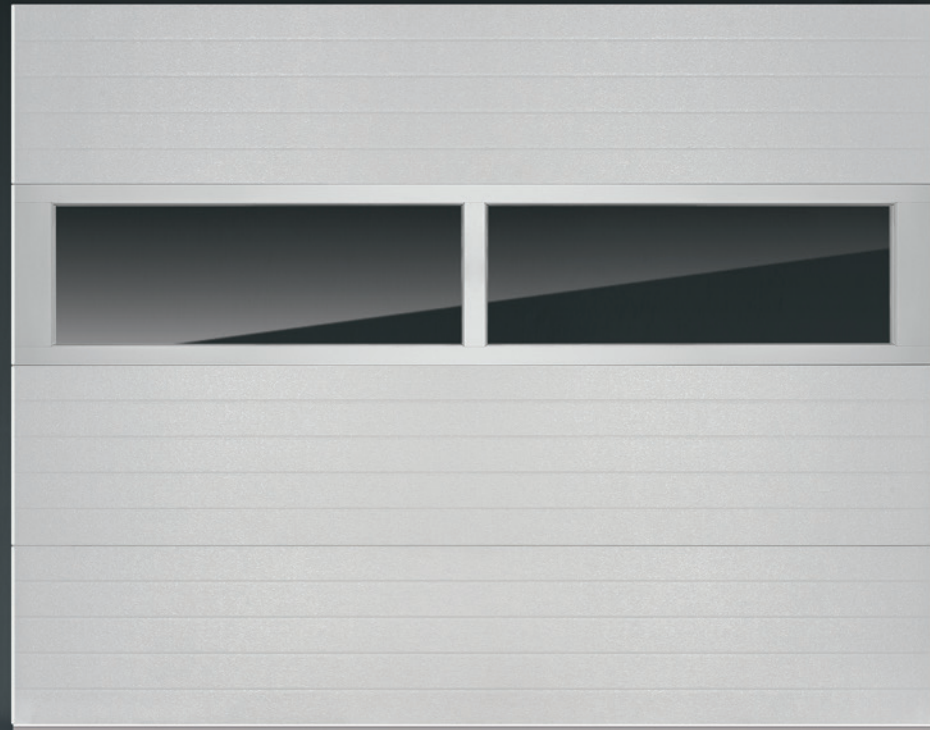
- Torsion springs are helically wound with oil-tempered wire
- Springs are individually-calibrated for each door
- Torsion tubes are galvanized for rust resistance
- High cycle spring options may be specified

## INSULATION TYPE

- Polystyrene core that's secured in place with a urethane adhesive to increase structural integrity
- Insulated doors R-value\* - 10.29

\*R-value Testing is in accordance with ASTM C518 standards.

***C.H.I. effectively combines expert craftsmanship with computerized precision in the construction of each and every door we make.***



9' x 7' 3285 white with optional white full-view window section.



These models are also available in



***MICRO-GROOVED POLYSTYRENE SANDWICH***

DEPENDABLE. RELIABLE.



9' x 7' 3206 white with optional 24" x 6" windows.



## ***MICRO-GROOVED POLYURETHANE SANDWICH***

EFFICIENT. DURABLE.

**MODEL 3206** 28-gauge, Polyurethane

### **SECTIONS**

- Sections are 1.5" thick
- Sections include a thermal break to eliminate thermal convection
- Features four evenly spaced micro-grooves that run horizontally across each section
- Concealed steel back-up plates run from top to bottom of each section for secure hardware attachment
- Bottom "U" type astragal is a standard feature
- Available in white only

### **TRACKS**

- Tracks are 2" or 3", as specified
- Available in bracket mount, angle mount, clip angle mount, 12" radius, 15" radius, high lift, vertical lift, roof pitch, or dual track low headroom

### **HARDWARE**

- Package includes 14 gauge and 10 ball rollers, as specified
- 2" or 3" short-stem or long-stem ball bearing rollers
- Heavy-duty adjustable top roller brackets

### **SPRINGS**

- Torsion springs are helically wound with oil-tempered wire
- Springs are individually-calibrated for each door
- Torsion tubes are galvanized for rust resistance
- High cycle spring options may be specified

### **INSULATION TYPE**

- Foamed-in-place CFC free polyurethane core
- Insulated doors R-value - 13.68



### **DOOR CONSTRUCTION**

28-gauge exterior and interior steel skins injected with CFC free urethane insulation. The thermally-broken tongue and groove section joint includes a continuous weather seal offering exceptional protection from the elements.

FEATURES

**MODEL 3216** 26-gauge, Polyurethane

**MODEL 3212** 20-gauge, Polyurethane

## SECTIONS

- Features four evenly spaced micro-grooves that run horizontally across each section
- 2" thick sections are foamed in place with polyurethane for superior R-value
- Thermally-broken to eliminate thermal conduction
- Gasket seal between sections provide for an extremely tight weatherseal
- Concealed steel back-up plates run from top to bottom of each section for secure hardware attachment
- Bottom "U" type astragal is a standard feature
- **Model 3216** is available in white, almond, sandstone, or brown
- **Model 3212** is available in white only

## TRACKS

- Tracks are 2" or 3", as specified
- Available in bracket mount, angle mount, clip angle mount, 12" radius, 15" radius, high lift, vertical lift, roof pitch, or dual track low headroom

## HARDWARE

- Package includes 11-gauge or 14-gauge hinges as specified
- 2" or 3" short-stem or long-stem ball bearing rollers
- Heavy-duty adjustable top roller brackets

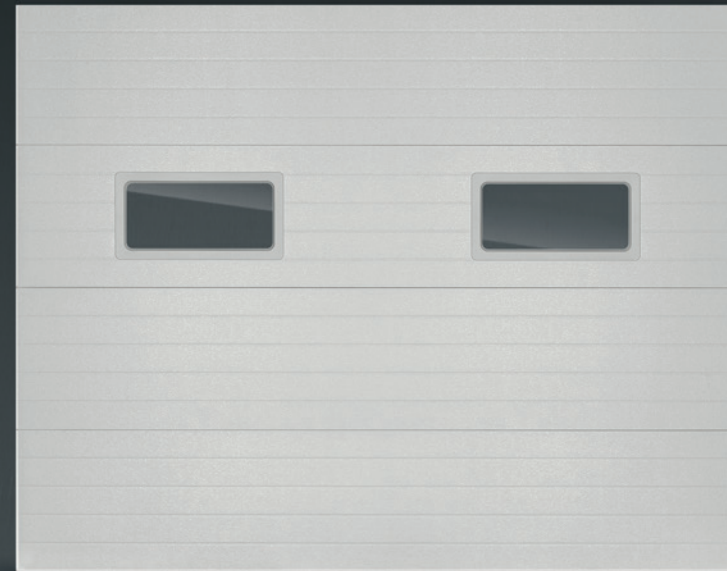
## SPRINGS

- Torsion springs are helically wound with oil-tempered wire
- Springs are individually-calibrated for each door
- Torsion tubes are galvanized for rust resistance
- High cycle spring options may be specified

## INSULATION TYPE

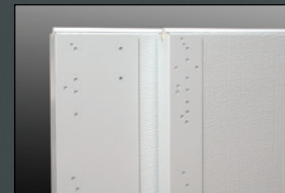
- Foamed-in-place CFC free polyurethane core
- Insulated doors R-value\* - 17.54

\*R-value Testing is in accordance with ASTM C518 standards.

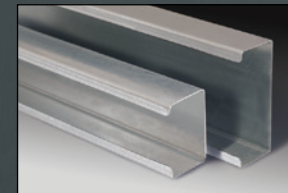


9' x 7' 3216 white with optional 24" x 12" windows.

These models are also available in



Box type stiles include unique tabs to keep insulation retainer clips tight against the stiles.



Section joints on all C.H.I. doors are tongue-and-groove for a tighter weatherseal and structural rigidity.



Extra-heavy bottom brackets are included for larger door sizes.

## MICRO-GROOVED POLYURETHANE SANDWICH

DURABLE.  
THERMALLY-BROKEN.



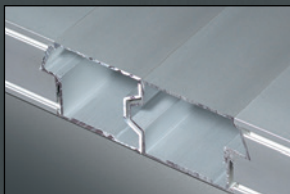




8' x 7' 3295 clear anodized aluminum with plain glass and optional aluminum panels in bottom section.



Sections are assembled with through bolts for added strength. Top seals are available as an option.



Section joints are tongue-and-groove for a superior weatherseal.



Glass replacement is easy using removable inside retainers.



## ALUMINUM FULL-VIEW DOORS

RESILIENT. STURDY.



### MODEL 3295 26-gauge, Polyurethane

#### SECTIONS

- Sections are 2" thick, and assembled with through bolts at each vertical stile location
- Section joints are tongue-and-groove for a superior weatherseal
- Wide bottom rails, top rails, and end stiles create an extra-strong frame for the door
- Insulated and tempered glass is available in some sizes
- Aluminum panels can be substituted for glass panels
- Glass or aluminum panels can be easily replaced by removing an inside retainer
- Bottom "U" type astragal is a standard feature
- Available in clear anodized aluminum, white or a selection of stock RAL powder-coat options of 188 colors

#### TRACKS

- Tracks are 2" or 3", as specified
- Available in bracket mount, angle mount, clip angle mount, 12" radius, 15" radius, high lift, vertical lift, roof pitch, or dual track low headroom

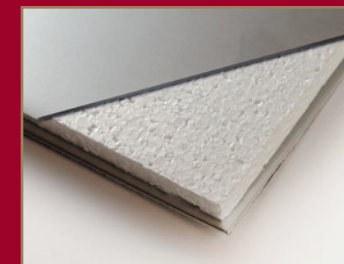
#### HARDWARE

- Package includes 11-gauge or 14-gauge hinges as specified
- 2" or 3" short-stem or long-stem ball bearing rollers
- Heavy-duty adjustable top roller brackets

#### SPRINGS

- Torsion springs are helically wound with oil-tempered wire
- Springs are individually-calibrated for each door
- Torsion tubes are galvanized for rust resistance
- High cycle spring options may be specified

FEATURES



3/8" insulation available with aluminum panels.

C.H.I. Overhead Doors, Inc. ("C.H.I.") warrants steel garage door sections used in commercial applications, under normal conditions, against splitting, cracking, rusting through or delaminating for a period of ten (10) years. Hardware, including springs, is warranted against defects in material or workmanship for one (1) year. All warranty periods begin with the date of manufacture. C.H.I.'s obligations are strictly limited to repair or replacement of defective parts and components during the warranty period.

This limited warranty excludes: (1) rust caused by damages or scratching; (2) damage resulting from exposure to corrosive chemicals, corrosive fumes, salt environments including coastal areas, condensation, water or fire; (3) damages caused by accident, improper use, negligent operation, improper installation, improper maintenance or normal wear; (4) delamination caused by impact; (5) shipping, installation or labor charges; (6) defects in paints or coatings used to finish door sections; (7) any product or component which is modified, altered, or not part of the original door, and (8) damages resulting from any circumstances beyond the direct control of C.H.I.

In the event of a defective component, contact the dealer the door was purchased from within fifteen (15) days from discovery of the defect. C.H.I. reserves the right to inspect all products alleged to be defective and to verify eligibility of this limited warranty.

**THIS LIMITED WARRANTY EXCLUDES ANY LOSS OR DAMAGE NOT SPECIFICALLY UNDERTAKEN HEREIN, INCLUDING, WITHOUT LIMITATION, ANY CONSEQUENTIAL OR INCIDENTAL DAMAGES, SUCH AS DEATH, INJURY, DAMAGES TO PROPERTY, OR DAMAGES ARISING FROM LOSS OF USE OF ANY PRODUCT OR FACILITY. ALL OTHER WARRANTIES, EXPRESSED OR IMPLIED, INCLUDING ANY WARRANTIES OF FITNESS FOR A PARTICULAR PURPOSE AND OF MERCHANTABILITY, ARE HEREBY EXPRESSLY EXCLUDED.**

This warranty is non-transferable.



24" x 6" Window



24" x 12" Window



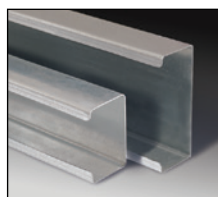
34" x 16" Window



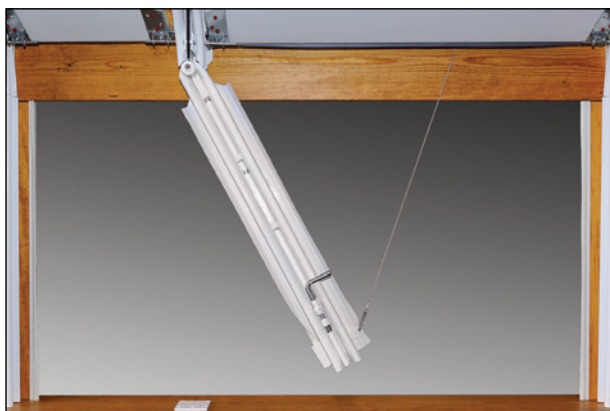
Exhaust Port



Inside Side Lock



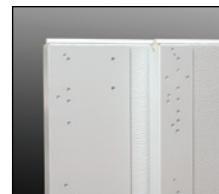
C-Channel Truss 4" and 6"



Swing-Up Post



Double-End Hinges



4" or 8" white painted Stiles  
Models 3216 and 3285



Top Seal



2" and 3" Tracks



Insulation with Steel Back Cover



Clip Angle and Full Angle Tracks

#### DOOR WIDTH/PANEL ACROSS

DOOR WIDTH	3250/51/52	3240/41/42	3220/21/22	3285	3206	3216	3212	3295
THRU 9'5"	2	2	2	2	2	2	2	2
9'6"-12'11"	3	3	3	3	3	3	3	3
13'0"-16'5"	4	4	4	4	4	4	4	4
16'6"-20'2"	5	5	5	5	5**	5	5	5
20'3"-24'2"	-	6	6	6	-	6	6	-
24'3"-26'2"	-	8*	-	-	-	8	-	-
26'3"-30'2"	-	10*	-	-	-	10	-	-
30'3"-32'2"	-	12*	-	-	-	12	-	-
32'3"-34'2"	-	12*	-	-	-	-	-	-

\* 3240 & 3241 ONLY \*\* Up to 18'2"

#### DOOR HEIGHT/NUMBER OF SECTIONS

DOOR HEIGHT	3250/51/52	3240/41/42	3220/21/22	3285	3206	3216	3212	3295
THRU 8'	4	4	4	4	4	4	4	4
8'3"-10'	5	5	5	5	5	5	5	5
10'3"-12'	6	6	6	6	6	6	6	6
12'3"-14'	7	7	7	7	7	7	7	7
14'3"-16'	8	8	8	8	8	8	8	-
16'3"-18'	-	9	-	9	-	9	-	-
18'3"-20'	-	10*	-	10	-	10	-	-

\* 3240 & 3241 ONLY

Specifications are subject to change without notice.

Note: If adding an electric operator to standard lifts or low headrooms add a minimum of 3".

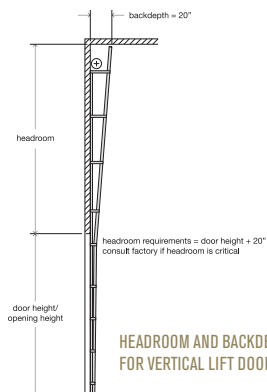
Please note that some optional features shown may not be available on all models, please see distributor for details.

## SPECIFICATIONS, OPTIONAL FEATURES AND ACCESSORIES

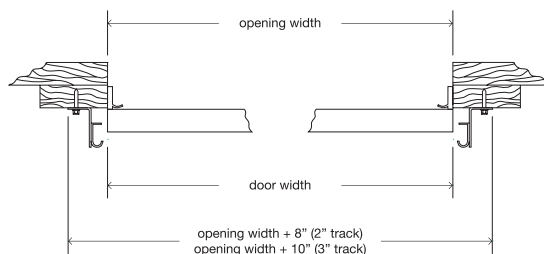
Because commercial applications vary, C.H.I. offers a number of innovative ways to customize your door.



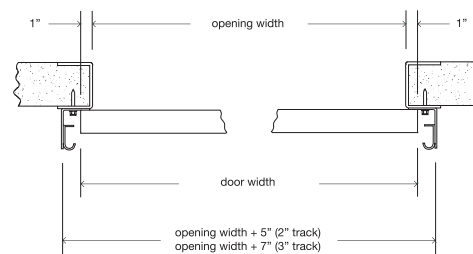
## TRACK SYSTEMS



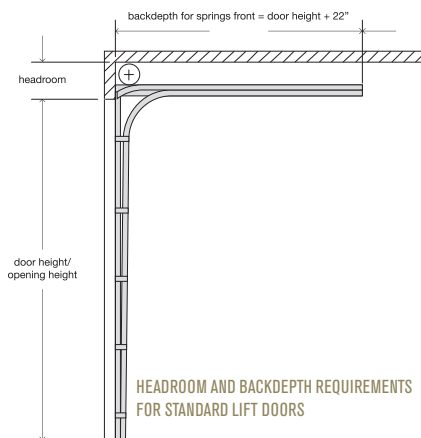
HEADROOM AND BACKDEPTH REQUIREMENTS  
FOR VERTICAL LIFT DOORS



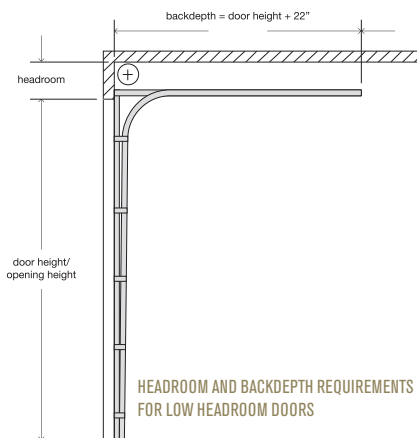
BRACKET MOUNTED TRACK ANGLE MOUNTED TRACK:  
LEG OUT (WOOD JAMBS SHOWN)



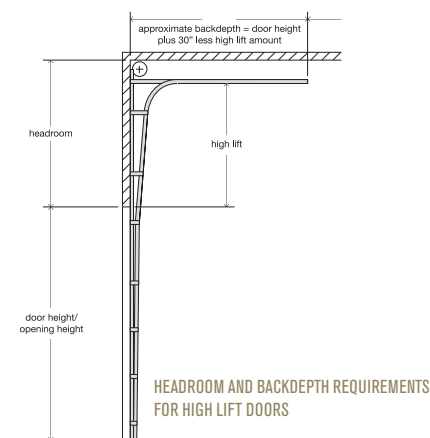
REVERSE ANGLE TRACK:  
LEG IN (STEEL JAMBS SHOWN)



HEADROOM AND BACKDEPTH REQUIREMENTS  
FOR STANDARD LIFT DOORS



HEADROOM AND BACKDEPTH REQUIREMENTS  
FOR LOW HEADROOM DOORS



HEADROOM AND BACKDEPTH REQUIREMENTS  
FOR HIGH LIFT DOORS

### HEADROOM REQUIREMENTS FOR STANDARD LIFT

DOOR HEIGHT	2" TRACK 12" RADIUS	2" TRACK 15" RADIUS	3" TRACK 15" RADIUS
UP TO 12'	12"	15"	16"
12'3"-16'	15"	16"	17"
16'3"-18'	N/A	N/A	17"
OVER 18'	N/A	N/A	22"

VARIOUS SPRING AND DOOR DESIGNS MAY REQUIRE ADDITIONAL HEADROOM.  
CONSULT FACTORY IF HEADROOM IS CRITICAL.

### HEADROOM REQUIREMENTS FOR LOW HEADROOM

TRACK SIZE	TRACK RADIUS	DOOR HEIGHT	TORSION SPRINGS FRONT	TORSION SPRINGS REAR
2"	12"R	UP TO 10'	7"	3"
2"	15"R	UP TO 12'	9"	6"
2"	15"R	12'3"-16'	11"	6"
3"	15"R	UP TO 12'	11"	8"
3"	15"R	12'3"-18'	13"	8"

VARIOUS SPRING AND DOOR DESIGNS MAY REQUIRE ADDITIONAL HEADROOM.  
CONSULT FACTORY IF HEADROOM IS CRITICAL.

### MAXIMUM HIGH LIFT

AVAILABLE HEADROOM	2" TRACK	3" TRACK
UP TO 64"	HEADROOM MINUS 10"	HEADROOM MINUS 11"
65"-133"	HEADROOM MINUS 13"	HEADROOM MINUS 14"
134"-180"	HEADROOM MINUS 16"	HEADROOM MINUS 17"

WHITE

ALMOND

SANDSTONE

BROWN

GRAY

COLOR SELECTIONS

Please note that all color options  
are not available for all models.  
Refer to samples at your local  
C.H.I. distributor for exact color  
match.



Wind can be unpredictable and destructive. This is why C.H.I. Windbreaker Series and iSeries doors are designed, tested, and built to the most rugged specifications. Wind chamber tested to ensure wind-load resistance, these extra-sturdy designs provide enhanced defense against the elements.

C.H.I. Overhead Doors developed the resilient Windbreaker Series garage doors to protect against high wind conditions. The super-resilient C.H.I. iSeries Impact Approved doors have strength designed to withstand direct collision of projectiles and other windborne debris at high speeds.

PROFESSIONAL. CHOICES.





PLEASE VISIT OUR WEBSITE AT [WWW.CHIOHD.COM](http://WWW.CHIOHD.COM) TO SEE OUR ENTIRE LINE OF SECTIONAL AND ROLLING STEEL DOORS.

VISIT YOUR DOOR PROFESSIONAL AT:  
**OMEGA GARAGE DOORS, INC.**

**West Melbourne, FL**  
**(321) 724-1593**

**Ocala, FL**  
**(352) 620-8830**

C.H.I. Overhead Doors are manufactured in Arthur, Illinois, USA.

